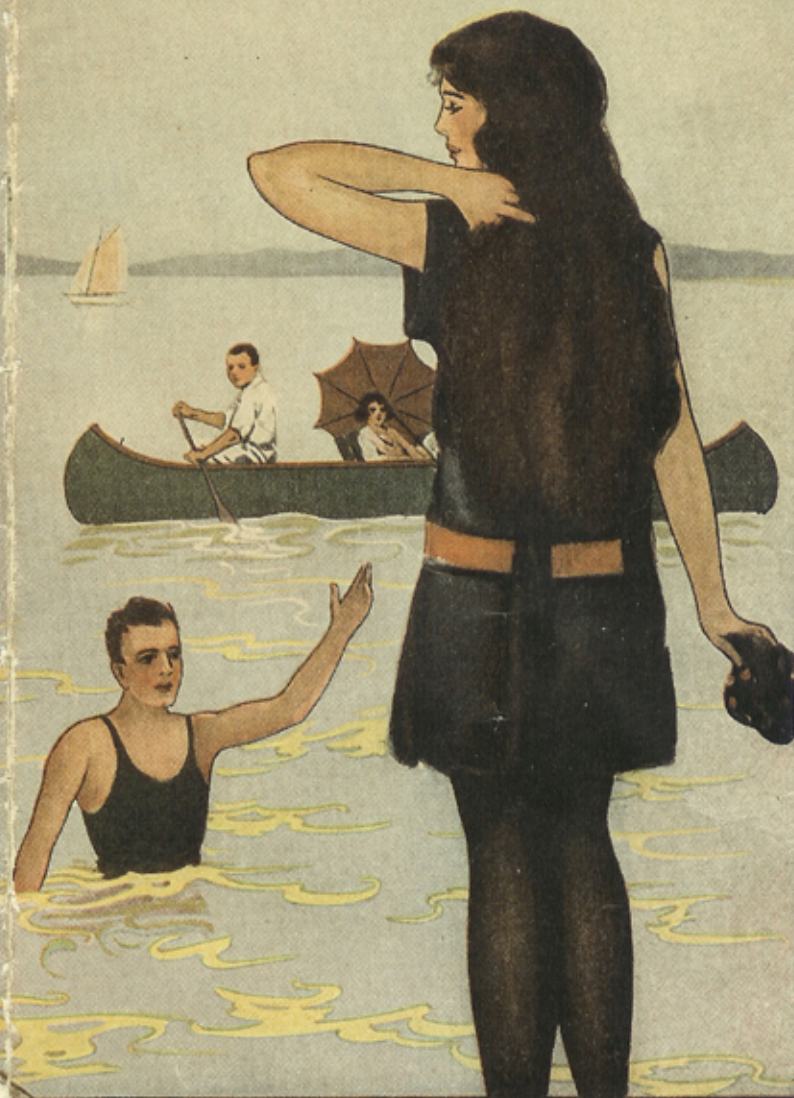


CONNEAUT LAKE



QUEEN OF
SUMMER
RESORTS

CONNEAUT LAKE



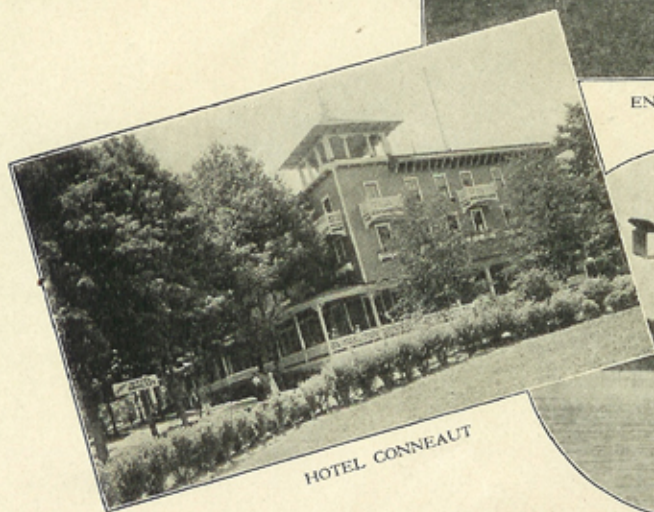
QUEEN OF
SUMMER
RESORTS

BEAUTIFUL CONNEAUT LAKE

QUEEN OF SUMMER RESORTS



ENJOYING CAMP
LIFE



HOTEL CONNEAUT



THE PAVILION

OVER THE LAKE BY AEROPLANE

I AM more than half in love with her! She is beautiful—not with the warm, passionate beauty of Atlantic City, the austere mountain beauty of Bedford Springs, nor the strange sophisticated, destroying beauty of Coney Island, but with a sweet, domestic beauty like that of a young wife, gay, strong, alert, enthusiastic, with a twinkle in her eye, a laugh upon her lips. She has temperament and charm—qualities as rare, fascinating and as hard to define in a summer resort as in a human being.

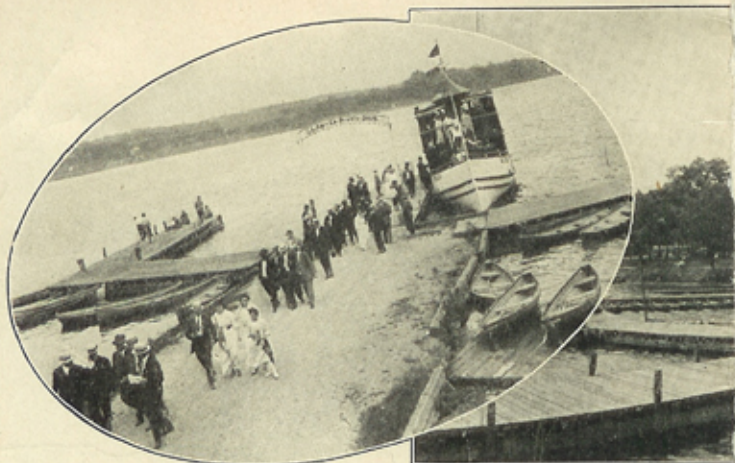
Do you ask why she is different from other resorts? They tell a romantic story. Tradition says that long ago when the Seneca Indians roved through the forests and paddled their birch-bark canoes over Conneaut's placid waters a young brave from a tribe

farther north wooed and won the favored daughter of the Seneca Chief, and the betrothal and marriage took place where Exposition Park now stands. Then bear, deer and kindred game were very plentiful, but a wonderful transformation has since taken place. Human hands have added to nature's enchantment, new charms attract the eye and appeal to man, offering rest, recreation and renewed vigor to combat life's struggles.

Although almost in sight of Lake Erie, the waters of Conneaut Lake are four hundred feet higher, and the elevation is seven hundred feet greater than Pittsburgh. This has a whole lot to do with the clear, bracing atmosphere and the sunny, invigorating days so noticeable at Conneaut Lake. The clean, ozone-laden air, filled



WATCHING A TROTTING RACE



LANDING AT EXPOSITION PARK

with the sweet perfume of woods and water and fields and flowers, carries health to the system and restful quiet to the nerves. Nowhere is sleep more peaceful and refreshing to mind and body than at Conneaut.

At Exposition Park "life is worth living." Located on the west shore, it has its own water works and electric light plant, and is always ready to welcome visitors. Its many attractions—Fishing, Bathing, Boating, Dancing, Baseball, Tennis, etc.—add to the diversions which make the stranger's visit pleasant. The illustrations on the following pages show a few of the many pleasures enjoyed at this resort.

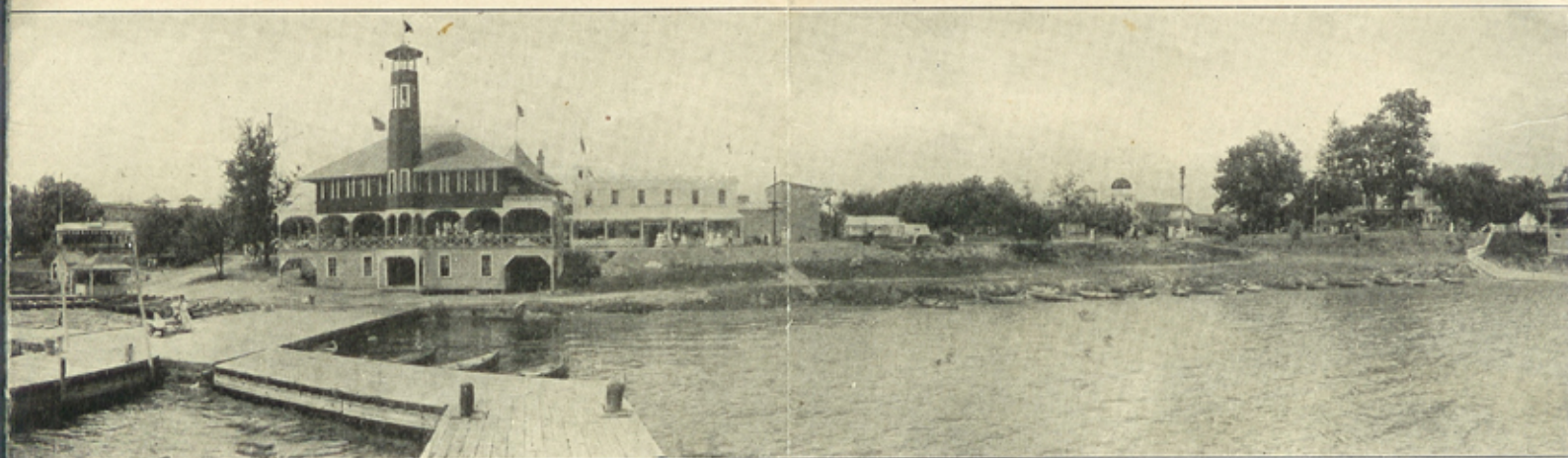
Scarcely more than three hours by rail from Pittsburgh, and even less from Cleveland, Erie, or Buffalo, with up-to-date train equipment and frequent service, the trip to the Lake from any of these centers is a pleasure entirely free from the toilsome trials of a long journey. And yet there is enough of the ride to give one the impression of having gotten completely away from the daily grind.

And nowhere can one extract so much pleasure and health for so little money. Whether one has run over to Conneaut Lake for the week-end, or to spend a vacation for a fortnight or a month, there are ample hotel accommodations at very reasonable rates for high-class service and cuisine. Then there are boarding cottages where one may stay for a week or month more quietly and at even less expense. Hundreds of families own cottages at the Lake and spend practically their whole summer there in the full enjoyment of this delightful resort, while many others rent cottages, or, if they prefer, camp in the commodious and well-appointed tents and thus get the benefits of complete outdoor life.

There are excellent provisions, too, for parties or societies that come on picnics just for the day.

So, whether it be for a day, a week, or a whole season, Conneaut Lake is the ideal spot for your vacation or outing. Here you find everything in pleasing contrast with the events that go to make up one's ordinary daily life, and here are found, too, the good fellowship and freedom from formality that are so much a part of the social charm of the summer colony.

PICNICS. This is the best picnic ground within a radius of two hundred miles. All kinds of organizations come here: schools, churches, Sunday schools, societies, lodges, employees of shops and stores, and clubs and associations of various kinds. At intervals through the season one-day excursions are run from



MAIN LANDING, SHOWING BOAT AND BATHING HOUSES

near-by towns. The railways are accommodating, giving excellent train service.

COTTAGES AND TENTS. Parties desiring a more private way of living than the excellent hotels afford, will find splendid cottages, tents and tenting sites. A long or short stay is pleasant in one of these. Supplies may readily be purchased or meals taken out.

BATHING. The Beach is one long, sandy slope. The dangers of sea bathing are absent, and no sunken trees or sink holes mar water sports. It is entirely safe for children to wade and frolic in; and for people who cannot swim, it is a splendid place to learn. The large bathing pavilion, with its 150 dressing-rooms and 300 lockers, is kept clean and spotless, as are also the excellent bathing suits, in all sizes, kept for hire. All kinds of adjuncts for swimming and diving are at hand—such as spring boards, platforms, toboggan, and the like.

BOATING AND FISHING. The lake being four miles long and one and a half miles broad affords a straight pull-away, which in the early morning is a fine appetizer, and in the evening a splendid sleep inducer. A hundred or more modern boats, built specially for safety, are for hire. The expert oarsman can show his skill, the seeker after a fine tan can acc the "disciple play his av



CAUGHT AT CONNEAUT LAKE

pike, salmon, and the gamy bass are found, along with the more humble but numerous blue-gill and perch.

RACING. The fastest half-mile track in the State is said to be the one at Conneaut Lake. Two fast race meets are given here, attracting the talent from all the surrounding towns, and spectators more than fill the grand stand, holding 5,000. Conneaut Lake is on the Lake Erie Circuit, and one race meet is held early in July; the other during the Conneaut Lake Fair, the last week in August. This is a good exposition of industries, and attracts crowds from all the cities round about. The horse and cattle exhibit is a feature.

BOWLING. The Arcade is given over largely to bowling. Eight regulation alleys are installed, which are used by both ladies and gentlemen. In fact, ladies participate in all sports conducted on the grounds, as no place unsuited to their attendance is permitted to exist. Billiard and pool tables are here, and one may develop his strength, skill, or dexterity in the different ways as suits his inclination.

DANCING. The dancing hall, with its 17,000 square feet of specially laid maple floor, is one of the best buildings devoted to the art in this country. Dancing is indulged in six days in the week. Nirella's Orches tra of



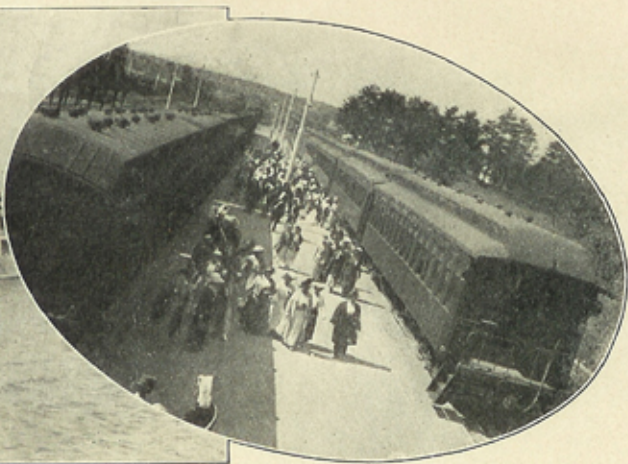
AUTO
RENDEZVOUS



WATCHING THE BATHERS



BATH
HOUSE



COMING BY TRAIN

Pittsburgh has been engaged for the season, which assures the best music obtainable.

BASEBALL. A regulation diamond is laid out and maintained in the best of condition. The grand stand seats a large crowd. It is enclosed, but free to the use of all visitors when not reserved for professional matches, which are usually held on Saturdays and holidays. At these times the baseball enthusiast can see good games.

TENNIS. The tennis courts are laid out to the south of Hotel Conneaut. The grounds are kept up in good shape, and largely patronized. Those who do not happen to have their own implements for playing the game may obtain racquets and balls from the management.

HOTEL ACCOMMODATIONS. For those who want to sojourn without a care at Conneaut Lake a goodly number of fine hotels give the best of entertainment. The rooms are pleasant, the beds are good and the cuisine has all seasonable food temptingly served. The principal inns are Hotel Conneaut, The Virginia, Hotel Reany, and Park Hotel; but, in addition, are numerous boarding cottages on the grounds, and hotels on the east side of the lake. Rates are reasonable for the accommodations, and a constant stream of guests arrive and depart, making a more or less extended stay.

DIRECTORY. Visitors intending to stay for any length of time, or those expecting mail or express, should register immediately, giving address on grounds, time that they intend to remain, so that telegrams, mail, and parcels may be delivered without delay.

SPECIAL RATES. Large parties may make special rates with park managers and railroads, who will do anything reasonable to make the place and service attractive for meetings. A representative from the park management will be glad to meet committees and individuals with a view to arrange for picnics, outings, or any special assemblies.

RAILROAD RATES. The same favorable rates on the railroad will be continued this season as prevailed during last season. This includes special one-day, week-end, and tourist tickets, that go on sale May 26th, continuing until September 24th.

SATURDAY AFTERNOON SPECIAL. Beginning June 24th, and continuing throughout July, August, and part of September, this popular train will carry the week-enders to the lake. Train consists of wide vestibuled day coaches and parlor cars, and leaves Pittsburgh (north side B. & O. depot) each Saturday at 2.15 P. M., city time, making but two stops (Butler and Grove City), and arriving at the lake in time for dinner. Returning, the special leaves Exposition Park on Sunday at 7 P. M., arriving in Pittsburgh about 10.30 P. M. Week-end tickets are also accepted on regular trains the Monday following date of sale.

FOR INFORMATION regarding train service, picnic dates, etc., apply to any agent of Bessemer & Lake Erie R. R. Co., or E. D. Comstock, G. P. A., Frick Building, Pittsburgh, Pa.

For information concerning hotel accommodations, camp sites, cottages, or dates for conventions, apply to Conneaut Lake Company, Exposition Park, Pa.

The railroad company maintains an agency office at Exposition Park, Pa., from May 15th to September 30th.

If you wish copies of this folder sent to friends, mail their names and post-office addresses to E. D. Comstock, G. P. A., Frick Building, Pittsburgh, Pa.